

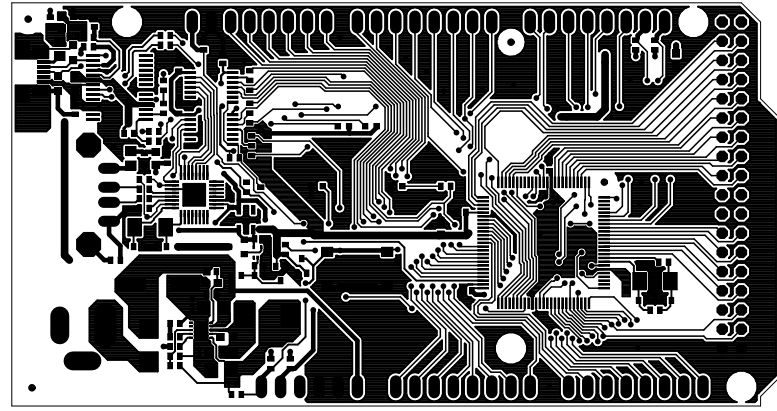
**NOTES:**

1. MATERIAL: MAKE FROM EPOXY GLASS (NEMA-GR-FR4), COPPER CLAD LAMINATE WITH 1 OZ. COPPER ON OUTER LAYERS. 2 LAYERS, RoHS COMPATIBLE
2. PLATING
  - A. APPLY WHITE SOLDER MASK OVER BARE COPPER (SMOBC) WITH LIQUID PHOTO-IMAGEABLE SOLDERMASK
  - B. PLATE EXPOSED PADS WITH RoHS COMPLIANT MATERIAL
3. SILKSCREEN BOTH SIDES WITH BLACK NON-CONDUCTIVE INK
4. 0.041" DRILLS MARK ENDS OF 3 PLATED SLOTS (SEE DRILLS and MILLING PAGE)
5. PLACE PCB VENDOR, UL94V0 CODE APPROX. WHERE SHOWN ON TOP SILKSCREEN

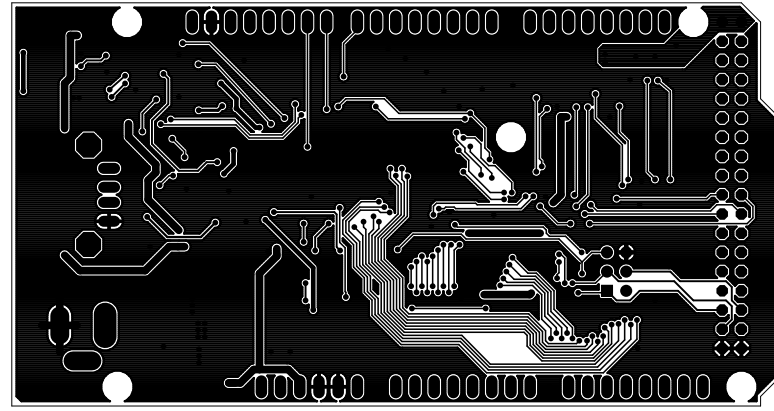
Copyright (C) 2011 The Android Open Source Project

This work is licensed under the Creative Commons Attribution-ShareAlike 3.0 Unported License. To view a copy of this license, visit <http://creativecommons.org/licenses/by-sa/3.0/> or send a letter to Creative Commons, 171 Second Street, Suite 300, San Francisco, California, 94105, USA.

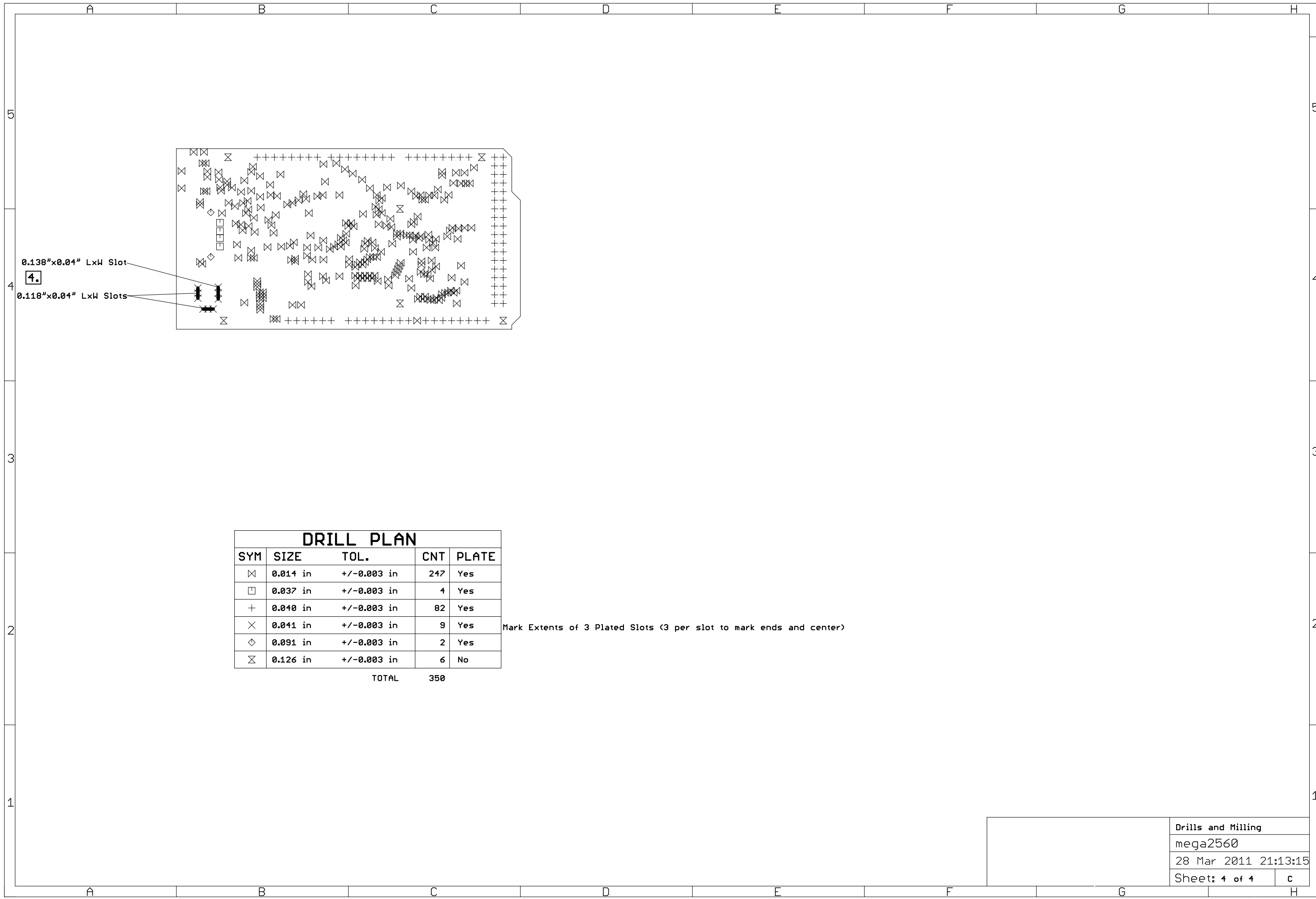
Notes	
mega2560	
28 Mar 2011 21:13:15	
Sheet: 1 of 4	c



Top	
mega2560	
28 Mar 2011 21:13:15	
Sheet: 2 of 4	c



Bottom	
mega2560	
28 Mar 2011 21:13:15	
Sheet: 3 of 4	c



**DRILL PLAN**

SYM	SIZE	TOL.	CNT	PLATE
⊗	0.014 in	+/-0.003 in	247	Yes
□	0.037 in	+/-0.003 in	4	Yes
+	0.040 in	+/-0.003 in	82	Yes
×	0.041 in	+/-0.003 in	9	Yes
◇	0.091 in	+/-0.003 in	2	Yes
⊗	0.126 in	+/-0.003 in	6	No

TOTAL 350

Mark Extents of 3 Plated Slots (3 per slot to mark ends and center)

Drills and Milling	
mega2560	
28 Mar 2011 21:13:15	
Sheet: 4 of 4	c